

ADF Essentials na aplikacijskom serveru Glassfish

Vladimir Koren, Davor Gardijan

Rovinj, 16.10.2013.


ADF Essentials - ukratko

- Reducirani ADF
- Nema troškova licenciranja
- Dozvoljeno korištenje na svim Java EE serverima
- Glassfish certificiran

ADF Essentials – motivacija

- Stare 10g aplikacije
- Oracle Application Server Standard Edition One
- Weblogic Basic
- Weblogic Standard Edition

ADF vs ADF Essentials

Component	Full ADF	ADF Essentials
ADF Faces		
ADF Data Visualization Tools		
ADF Controller		
ADF Security		
ADF Business Components		
ADF Model		
ADF Share		
MetaData Services (MDS)		

* komponente bitne za ADF web aplikacije

ADF vs ADF Essentials

Oracle ADF Essentials includes the following Oracle ADF components:

Oracle ADF Faces Rich Client Components, Oracle ADF Controller, Oracle ADF Model and Oracle ADF Business Components.

The following functionality is not included in Oracle ADF Essentials, and requires the full Oracle ADF version:

Oracle ADF Mobile, Oracle ADF Desktop Integration, Oracle ADF Security, The Oracle ADF Web service data control, Oracle ADF remote taskflows, Oracle ADF Business Component's Service Interfaces, Oracle ADF Data Controls for BI, Essbase and BAM, Integration with Oracle Fusion Middleware features such as MDS, OPSS, OWSM, Enterprise Manager and MBeans, High Availability and Clustering.

Weblogic vs Glassfish

- Weblogic kao referentna platforma
 - Sve radi out-of-the-box
- Glassfish u dvije verzije
 - Open Source
 - Oracle Glassfish server

Glassfish - instalacija

- Oracle Enterprise Linux
 - 2.6.39-200.24.1.el6uek.x86_64
- Dva načina instalacije
 - ZIP datoteka
 - Interaktivna instalacija i konfiguracija

Glassfish - instalacija

Domain Info

Configure the administration settings for the server. Please provide the username and password for the server. You may leave the passwords empty if you would like to configure the server for unauthenticated logins.

Domain Name	<input type="text" value="domain1"/>
Admin Port	<input type="text" value="4848"/>
Http Port	<input type="text" value="8080"/>
Username	<input type="text" value="admin"/>
Password	<input type="password" value="••••••••"/>
Reenter Password	<input type="password" value="••••••••"/>
<input checked="" type="checkbox"/> Create Operating System service for the domain	
Service Name	<input type="text" value="domain1Service"/>
<input checked="" type="checkbox"/> Start domain after creation	

Glassfish konfiguracija za ADF Essentials

- OS parametri
- `<domain-home>/lib`
- `unzip -j adf-essentials.zip`
- `-Doracle.mds.cache=simple`

ADF Essentials - deploy

- Promjena deployment profila u JDeveloperu
- Deployment plan
- CLI vs GUI
- Veličina EAR-a

Application Security - OpenLDAP

- Container based security – JAAS
- Glassfish LDAP realm
- OpenLDAP kao centralni repozitorij
- Weblogic OpenLDAP Authenticator

Glassfish tuning

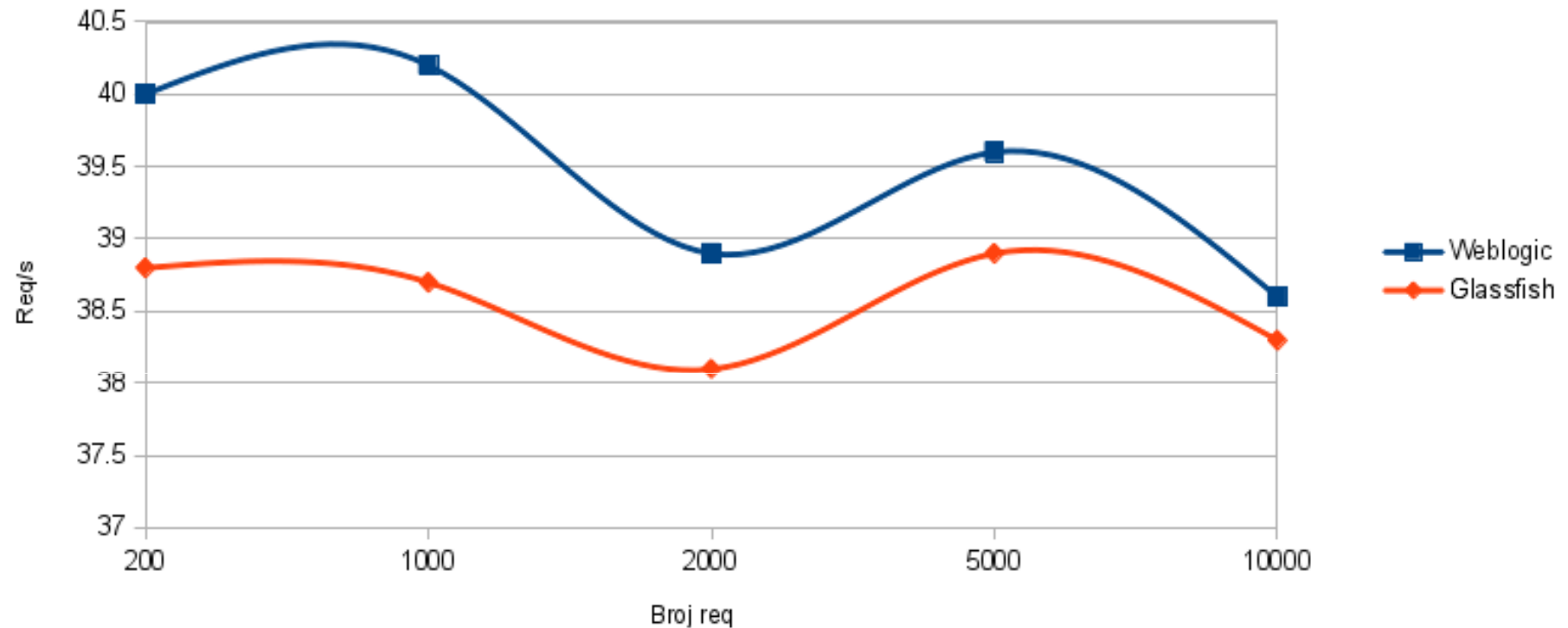
- *Performance Tuning Guide*
- Performance Tuner
- Garbage Collector
- Heap Size
- Thread Pool Size

Test performansi

- LDAP bind
- Apache JMeter
- DB connection pooling
- AM pasivacija/aktivacija

Weblogic vs Glassfish – ADF aplikacija

10 paralelnih korisnika



ADF Essentials i Glassfish - nedostaci

- Oprez kod razvoja
- Clustering i High availability
- Malo kompliciraniji deploy aplikacija
- Općenito potrebno malo više znanja o cijelom procesu izrade aplikacija

Zaključak

- Razmotriti upotrebu ADF Essentialsa: DA
- Spremno za produkciju: DA
- Kritične aplikacije: NE
- Preporuka: DA

Kraj

- Pitanja?
- vkoren@infoart.hr
- dgardijan@infoart.hr